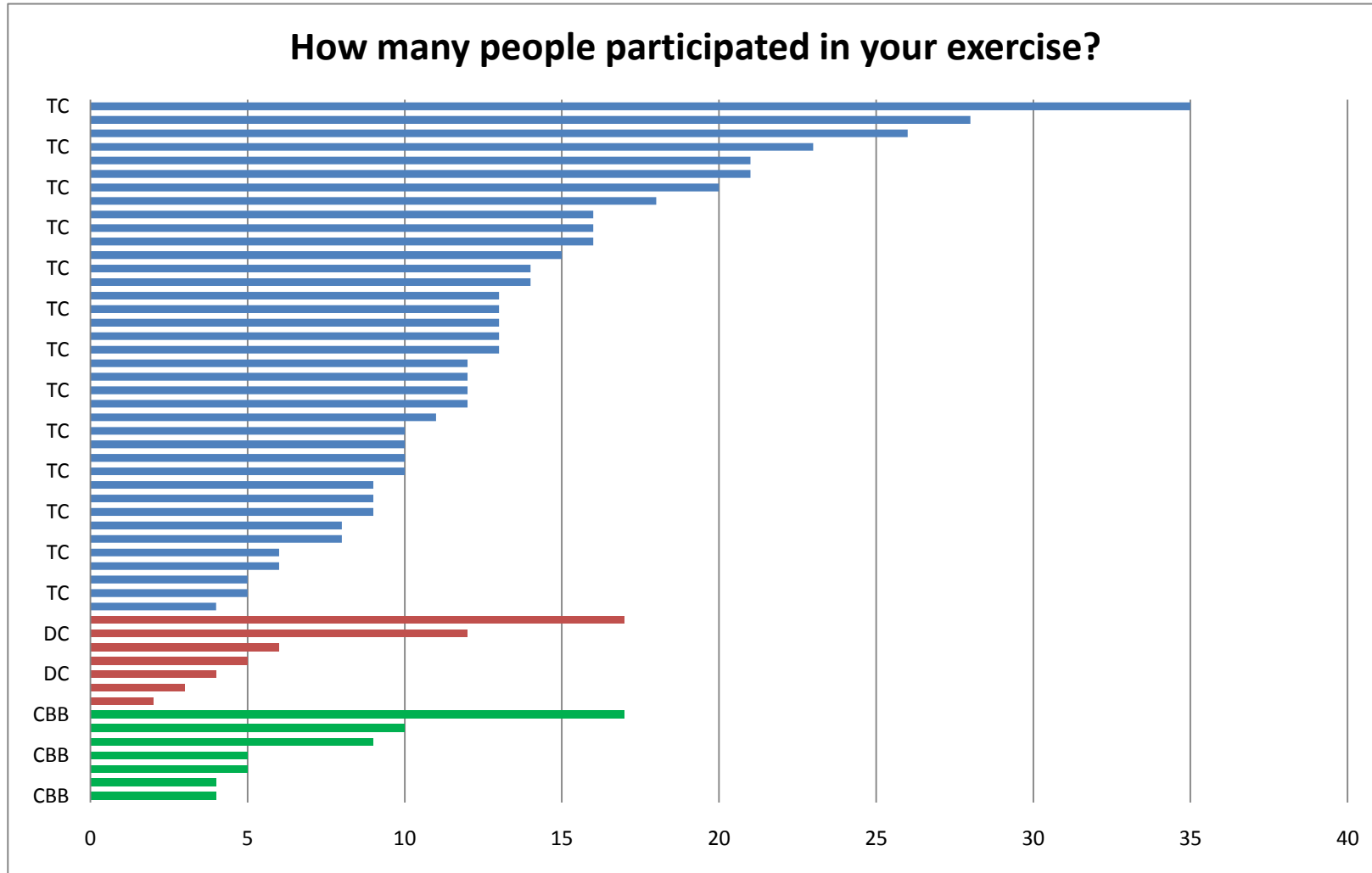


2009 RITN Tabletop Exercise Results (partial)



	n=	mean
TC	38	13.6
DC	7	7.0
CBB	7	7.7

7/11/11

2009 RITN Tabletop Exercise Results (partial)

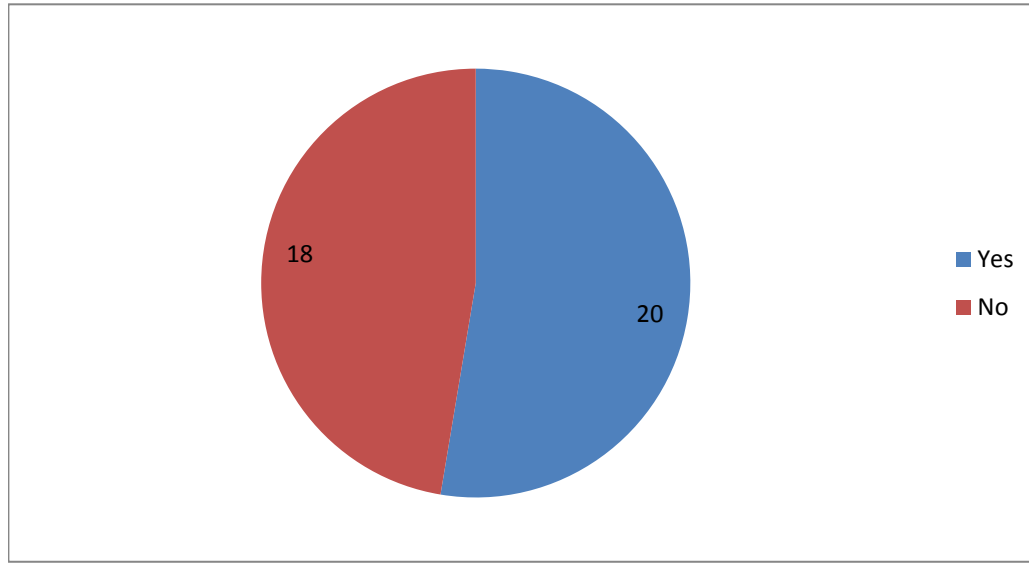
Identify all members of your incident response team

	Medical director	Another physician	Mid-level practitioner	Nurse (RN, LPN, etc..)	Emergency management staff	Executive management staff (ER)	Emergency medicine staff (ER)	Pharmacy staff	Health physicist	Logistics staff	Primary coordinator	RITN Point-of-contact	Admission process representative	Social worker	Representative from psychiatry/psychology	Radiation oncologist	Blood bank representative	Representative from physical exam provider	Representative from collection center or apheresis center	Vendor/contractors (laboratory for IDMs, etc...)	Other	
TC	n=38	87%	84%	58%	89%	74%	68%	32%	71%	34%	39%	84%	95%	37%	34%	21%	18%	47%	18%	55%	8%	55%
DC	n=7	57%	14%	14%	29%	29%	86%	14%	0%	14%	14%	100%	71%	14%	0%	14%	57%	29%	57%	29%	29%	43%
CBB	n=7	43%	14%	0%	71%	43%	57%	0%	0%	0%	29%	86%	100%	0%	0%	0%	0%	29%	0%	0%	0%	57%

7/11/11

2009 RITN Tabletop Exercise Results (partial)

Does your transplant center have a written plan to implement altered standards of care?

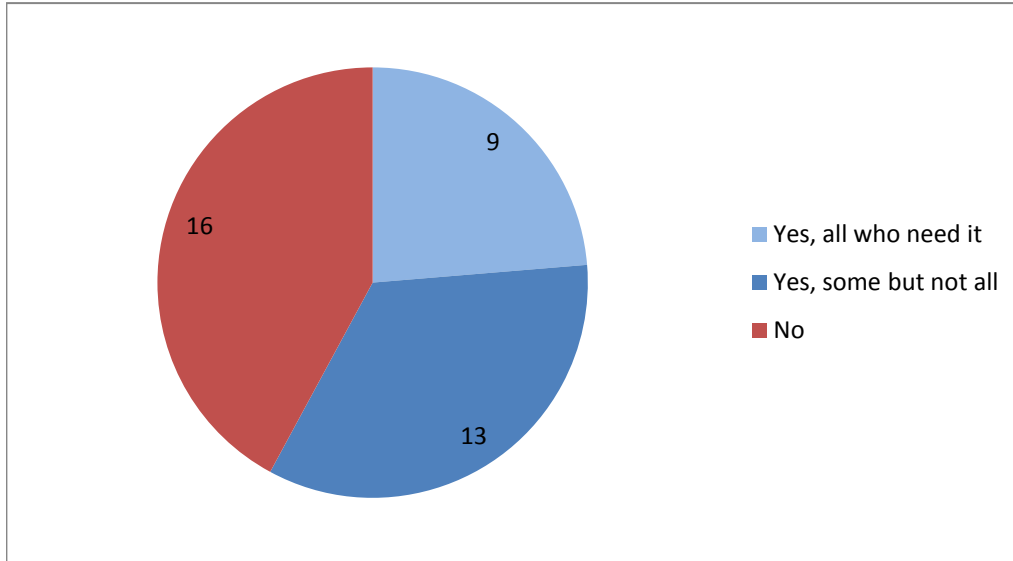


Yes	20	53%
No	18	47%

7/11/11

2009 RITN Tabletop Exercise Results (partial)

Has your hospital trained staff on the implementation of altered standards of care?



Yes, all who need it	9
Yes, some but not all	13
No	16

7/11/11

2009 RITN Tabletop Exercise Results (partial)

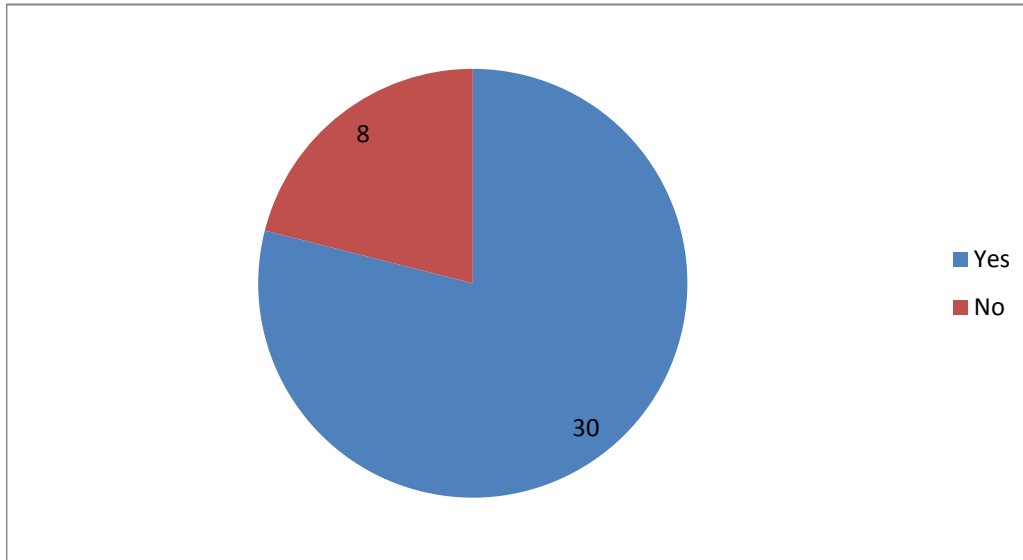
What decorporation agents do you have available for treatment (select all that apply)?

Potassium iodide (KI)	53%
Prussian blue	32%
Calcium- diethylenetriaminepentacetate (Ca-DTPA)	26%
Zinc-diethylenetriaminepentacetate (Zn-DTPA)	16%
None	11%

7/11/11

2009 RITN Tabletop Exercise Results (partial)

Does your transplant center have the expertise to employ decorporation agents?



Yes	30
No	8

7/11/11

2009 RITN Tabletop Exercise Results (partial)

Fifteen patients have 3rd degree burns over 20% of their body. Will your center (Select all that apply):

a. Admit them to the BMT unit	11%
b. Admit patient to an internal burn unit	37%
c. Admit patient to another internal hospital department	32%
d. Transfer patient to a another hospital with a burn unit	71%
e. Transfer the patient to another hospital that does not have a burn unit	3%
f. Other/unknown	3%

7/11/11

2009 RITN Tabletop Exercise Results (partial)

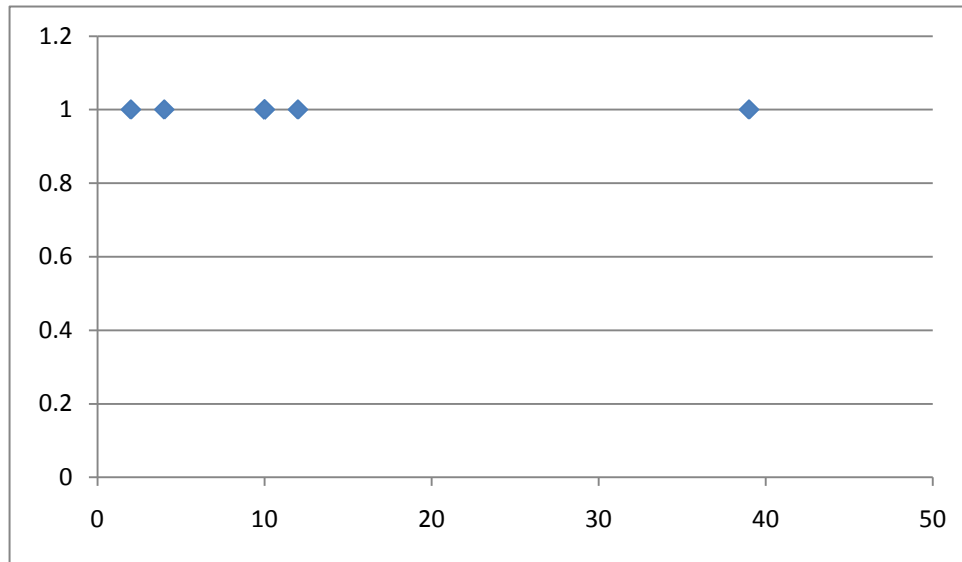
Fifteen patients have severe trauma (i.e., multiple fractures). Will your center (Select all that apply):

- | | |
|--|-----|
| a. Admit patient in the BMT | 11% |
| b. Admit patient to another internal hospital department | 74% |
| c. Transfer the patient to another hospital | 45% |
| d. Other/unknown | 5% |

7/11/11

2009 RITN Tabletop Exercise Results (partial)

How many units of cord blood can safely be shipped in one cord blood shipper?



n=7
mode = 10

responses:
2
4
10
10
10
12
39

7/11/11

2009 RITN Tabletop Exercise Results (partial)

Do you have the following contact information in your SOP (Select all that apply):

- | | |
|---|-----|
| a. Primary shipping company for cord blood shippers | 43% |
| b. Back-up shipping company for cord blood shippers | 43% |
| c. Name of person to contact and day phone numbers | 29% |
| d. After hours phone numbers | 29% |
| e. None of the above | 57% |

7/11/11

2009 RITN Tabletop Exercise Results (partial)

Do you have the following in your donor center SOP (Select all that apply, N=7):

a. Primary hotel for donors	57%
b. Back-up hotel for donors	57%
c. Secondary back-up hotel for donors	14%
d. Addresses for hotels	57%
e. Names of persons to contact and day phone numbers at each hotel	57%
f. After hours phone numbers for each hotel	43%
g. Transportation assets for donors	57%
h. Back-up transportation for donors	29%
i. Secondary back-up transportation for donors	14%
j. Names of persons to contact and day phone numbers for transportation companies	57%
k. After hours phone numbers for each transportation company	0%
l. Primary physical exam facility	57%
m. Back-up physical exam facility	43%
n. Secondary back-up physical exam facility	29%
o. Addresses for physical exam facilities	57%
p. Names of persons to contact and day phone numbers at each physical exam facility	57%
q. After hours phone numbers for each physical exam facility	29%
r. None of the above	14%

7/11/11

2009 RITN Tabletop Exercise Results (partial)

Does your donor center SOP include pre-scripted messages to the public concerning the following (Select all that apply, n=7):

- | | |
|--|-----|
| a. Message for surge of spontaneous donors | 14% |
| b. Message to cease or limit donor drives | 14% |
| c. Message to continue with scheduled donor drives | 14% |
| d. None of the above | 86% |

7/11/11